



## REGIONAL SPECIALISED METEOROLOGICAL CENTRE-TROPICAL CYCLONES, NEW DELHI TROPICAL WEATHER OUTLOOK

**DEMS-RSMC TROPICAL CYCLONES NEW DELHI DATED 07.12.2023**

**TROPICAL WEATHER OUTLOOK FOR NORTH INDIAN OCEAN (THE BAY OF BENGAL OF BENGAL AND THE ARABIAN SEA) VALID FOR NEXT 168 HOURS ISSUED AT 0600 UTC OF 07.12.2023 BASED ON 0300 UTC OF 07.12.2023.**

### **BAY OF BENGAL:**

YESTERDAYS WELL MARKED LOW PRESSURE AREA OVER OVER NORTHEAST TELANGANA AND ADJOINING SOUTH CHHATTISGARH-SOUTH INTERIOR ODISHA-COASTAL ANDHRA PRADESH WEAKENED INTO A LOW PRESSURE AREA OVER NORTHEAST TELANGANA & NEIGHBOURHOOD IN THE EVENING OF OF YESTERDAY, THE 6<sup>TH</sup> DECEMBER, 2023 AND BECAME LESS MARKED OVER SOUTH CHHATTISGARH & NEIGHBOURHOOD AT 0530 HOURS IST OF TODAY, THE 7<sup>TH</sup> DECEMBER, 2023. HOWEVER THE ASSOCIATED CYCLONIC CIRCULATION LAY OVER THE SAME REGION AND EXTENDS UPTO 3.1 KM ABOVE MEAN SEA LEVEL. THE CYCLONIC CIRCULATION PERSISTED OVER THE SAME REGION UPTO 1.5 KM AT 0830 HOURS IST OF TODAY, THE 7<sup>TH</sup> DECEMBER, 2023.

SCATTERED LOW AND MEDIUM CLOUDS WITH EMBEDDED ISOLATED MODERATE TO INTENSE CONVECTION LAY OVER BAY OF BENGAL AND ANDAMAN SEA.

#### **\*PROBABILITY OF CYCLOGENESIS (FORMATION OF DEPRESSION) DURING NEXT 168 HRS:**

24 HOURS	24-48 HOURS	48-72 HOURS	72-96 HOURS	96-120 HOURS	120-144 HOURS	144-168 HOURS
NIL	NIL	NIL	NIL	NIL	NIL	NIL

\*NOTE: EVERY 24HR FORECAST IS VALID UPTO 0300 UTC (0830 IST) OF NEXT DAY

### **ARABIAN SEA:**

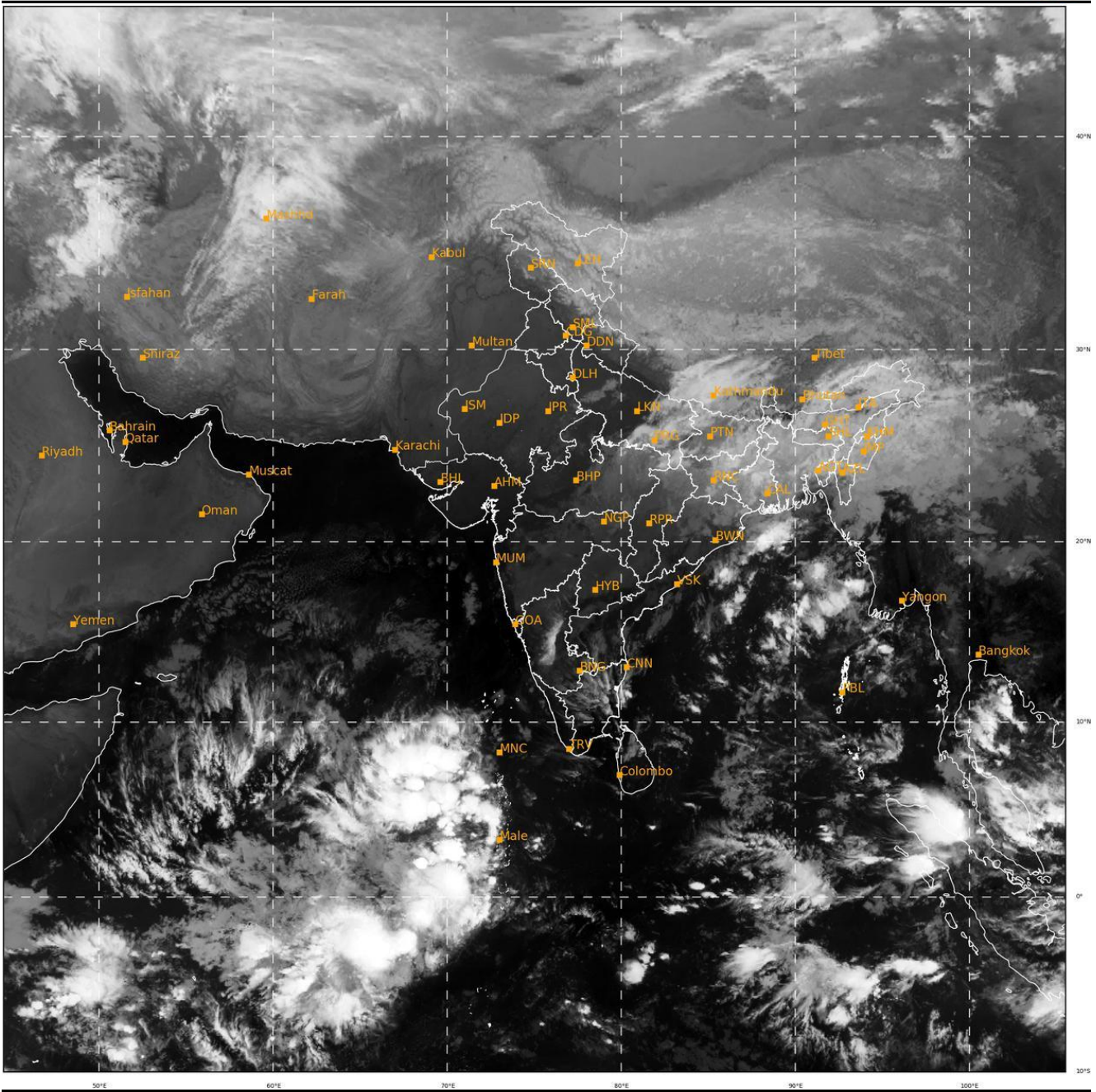
A CYCLONIC CIRCULATION LIES OVER SOUTHEAST ARABIAN SEA & NEIGHBOURHOOD AND EXTENDS UPTO 1.5 KM ABOVE MEAN SEA LEVEL.

SCATTERED LOW AND MEDIUM CLOUDS WITH EMBEDDED INTENSE TO VERY INTENSE CONVECTION LAY OVER SOUTHEAST ARABIAN SEA AND MODERATE TO INTENSE CONVECTION LAY OVER SOUTHWEST ARABIAN SEA.

#### **\*PROBABILITY OF CYCLOGENESIS (FORMATION OF DEPRESSION) DURING NEXT 168 HRS:**

24 HOURS	24-48 HOURS	48-72 HOURS	72-96 HOURS	96-120 HOURS	120-144 HOURS	144-168 HOURS
NIL	NIL	NIL	NIL	NIL	NIL	NIL

\*NOTE: EVERY 24HR FORECAST IS VALID UPTO 0300 UTC (0830 IST) OF NEXT DAY



525

938

IMD,DELHI

Cloud distribution: (a) Isolated: <25%, Scattered:25-50%, Broken: 51-75%, Solid:>75%, Convection Intensity: (a) Weak: Cloud Top Temperature (CTT) >-25°C, (b) Moderate: CTT: - 25°C to -40°C, (c) Intense: CTT: - 41°C to -70°C and (d) Very Intense: : Less than -70°C  
PROBABILITY OF CYCLOGENESIS (FORMATION OF DEPRESSION):NIL: 0%, LOW: 1-33%, , MODERATE: 34-66% AND HIGH: 67-100%  
This is a guidance Bulletin for WMO/ESCAP Panel Member countries. Visit respective National websites for Country specific Bulletins